

Netviewer five

What's new in Netviewer onezone

Online meetings and support sessions are now easier than ever before!

Netviewer five raises the bar for real-time virtual collaboration. With Netviewer's extensive palette of functions, a first-class, fully revised operational concept, and seamless integration into your work environment, you can hold support sessions and online meetings as if you and the other person were in the same room.



Netviewer onezone gives you the same visual communication tools that you would use during an on-site meeting. Accelerate your business processes in support, sales, development, or other areas of the company by holding efficient online meetings that will give your company a valuable competitive edge. Your business partners will be intrigued by this highly effective form of collaboration. Netviewer is even an environmentally friendly way to do business!

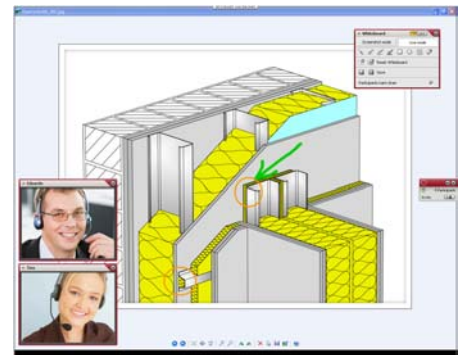
Learn more about the key features of Netviewer five.

Experience Netviewer for yourself.

First-class usability with minimal need for training

Floating windows let you drag and drop trays wherever you want

Control panel trays can be easily dragged away from the control panel and dropped anywhere on the screen. You can use this feature to organize the Netviewer interface according to your requirements. Once located outside of the control panel, the size of many trays, such as *Video and Chat*, can be adjusted as desired.

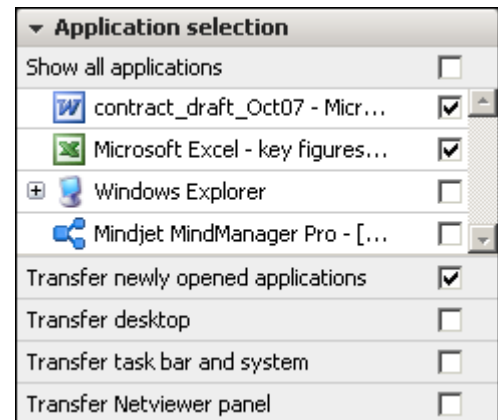


File transfers made easy: File-transfer Explorer

The new File-transfer Explorer in Netviewer onezone provides access to the file systems on the participant's and consultant's PCs from a shared program window. This makes the process of transferring files and folders from one PC to another even easier and more transparent than before. You simply select the files from the relevant location on the source computer and then select where you wish to save them on the target computer. Just one click is all that's needed to start the transfer. A status box allows you to observe the transfer progress. You'll find it easy to navigate and work just like you do in Windows Explorer.

Well-organized application selection with tree structure is easy to use

In the *Application selection* tray you determine which applications and elements of your screen your session partners will see. If one application has several open windows, then these will be shown below the application in a tree-type structure. In addition to individually opened instances of an application, entire application groups can also be released for transfer or hidden. When the user places the mouse over an application in the application selection area, that application will be visually highlighted.



Start meetings faster with seamless integration of applications

Ease of use and high user acceptance are important for establishing Web conferences as a standard tool at your company. Seamless integration into enterprise applications (such as ERP, CRM, help desk, Office applications, user directories, and portals) and communications solutions (such as e-mail, presence management, instant messengers, and shared workspaces) are critical aspects of making this a reality.

Netviewer five has an open architecture. Thanks to a variety of integration components like Java and COM-based interfaces and standardized plug-ins, it is easy to quickly integrate Netviewer into your internal applications and business processes.

Outlook plug-in lets you plan session appointments directly in Microsoft Outlook calendar

You can mark Outlook appointments as a Netviewer meeting while scheduling the appointment. When the moderator sends the appointment invitation to the participants, it will contain a link to start the Web meeting directly. The appointment will be entered into all participants' Outlook calendars.

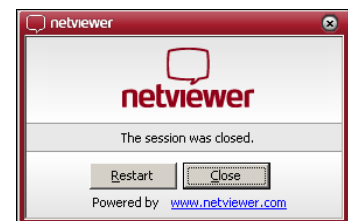
Starting Netviewer from another application with just one click: plug-ins for Skype and Lotus Notes

Netviewer plug-ins are useful for users who want a quick and easy way to start Netviewer from other applications. You can start a virtual session from the following applications with just one click: Microsoft Office (Microsoft Outlook, Word, Excel, PowerPoint), Microsoft Internet Explorer, Microsoft Windows Explorer, Mozilla Firefox, Mindjet MindManager. The latest plug-ins are for groupware solution Lotus Notes and Internet telephony tool Skype.

Additional functional and technical characteristics

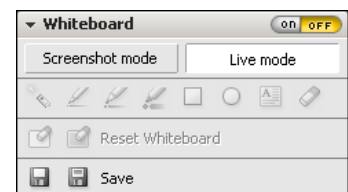
Increased stability and speed of the transmission connection: The stability of connections during network problems, firewall penetration, and transmission speed have once again been increased. Additional contributions in this area are the advanced Netviewer transport layer and support for the SSL protocol as another data-transfer option.

Restarting Netviewer after exiting a session: If you are conducting several Netviewer sessions, you will find the restart function in the exit dialog useful. You can use it to restart the Netviewer consultant program immediately at the end of a session. The session will be automatically started with the previously used profile.



Session recording now in .ASF file format: The recording function allows to retrace Web conferences. All session components, including voice (when using VoIP), are kept in the recording. Netviewer now supports session recording in file formats .nvl and .asf.

Activate Whiteboard, Live, or Screenshot mode with a single mouse click: Now you can activate and deactivate screenshot mode (freezes screen) and live mode (continues to transfer screen) with a single mouse click.



Drag & drop from Favorites into File-transfer or Video tray: If you have placed a file in the Favorites tray in the form of a link, you can drag it into the File-transfer (all file formats) and My video (file formats .avi and .mpeg) trays.

Avoid conference room bottlenecks with the Netviewer User Infobox: Have you ever wanted to start a Netviewer conference but found that all licensed rooms were already taken by your co-workers? When this happens, the User Infobox lets you see who is currently occupying the licensed rooms. This gives you the opportunity to reach an agreement with your co-workers. We are happy to provide this free option upon request. Please ensure in advance that usage of this function conforms with your company's data-protection regulations.

Footnotes

The range of available functions in the Netviewer programs depends on which product variation is licensed. Not all functions described in this document are included in the Netviewer one2one basis version, but are available at additional cost. Please contact your Netviewer sales partner or send an e-mail directly to info@netviewer.com if you are interested in optional functions.

Date: November 22, 2007